

BOWEN BWU

Interior Lighting / Downlight



Features

Circular surface mount downlight
High performance LED system for maximum energy saving
Advanced optics delivering low glare output
IP65 rated
Robust IK08 rated construction
Available in a range of wattages, colour temperatures and sizes
CRI ≥ 80
Quick and easy installation

Applications

Offices
Hotels
Retail complex
Residential
Building surrounds



Options

Dali Dimmable
Triac Dimmable
Beam Angle 24°, 36° and 60°

Standards

Manufactured under ISO 9001:2015 to standards
IEC/AS/NZS 60598.1
IEC/AS/NZS 60598.2.1
IEC/AS/NZS CISPR 15

Mounting



Surface mounted



Specifications

Model	BWU310-xyz	BWU520-xyz	BWU625-xyz	BWU630-xyz	BWU835-xyz	BWU1040-xyz
Nominal Power (W)	10	18	25	30	35	40
Input Voltage (V)	220-240					
CRI (Ra)	>80					
CCT (K)	3000/4000/5000					
Frequency (Hz)	50/60					
Luminaire Flux (lm)	1000	1800	2500	3000	3500	4000
Luminaire Efficacy (lm/W)	100					
Luminaire Rated Life (hr)	50,000					
Operating Temp. (°C)	-20 to 40					
IP Rating	IP65					
Power Factor	>0.90					
SDCM	<6					
Beam Angle (°)	36/60	24/36/60				
Weight (kg)	0.6	0.90	1.2	1.2	2.2	2.8

"x" denotes CRI & CCT, R83 = CRI>80, 3000K ; R84 = CRI>80, 4000K ; R85 = CRI>80, 5000K

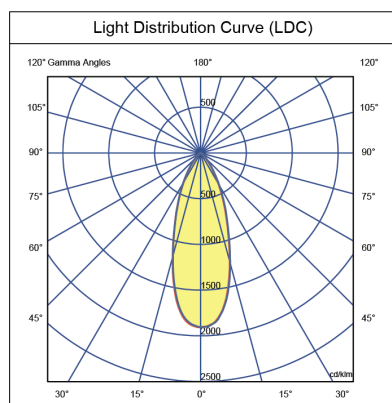
"y" denotes Beam Angle, B24 = 24° ; B36 = 36° ; B60 = 60°

"z" denotes Dimming, D10 = DALI; D13 = Triac

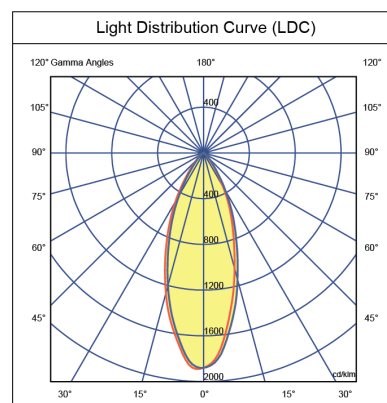
*Specifications shown for 4000K

Lighting Data

BWU310-R84B36

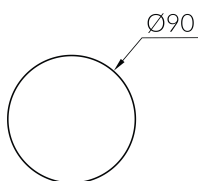
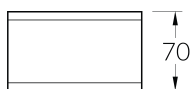


BWU520 / BWU630 / BWU835-R84B36

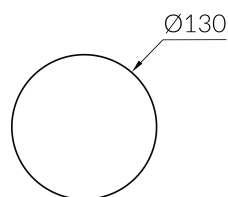
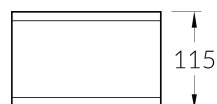


Dimensions (mm)

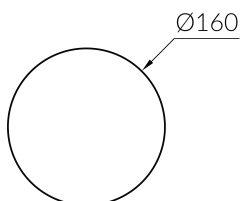
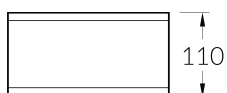
BWU310



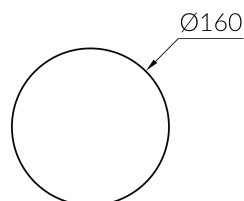
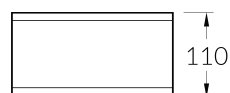
BWU520



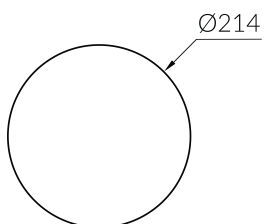
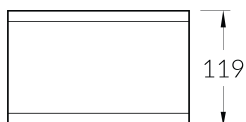
BWU625



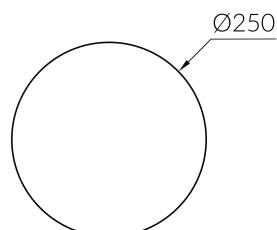
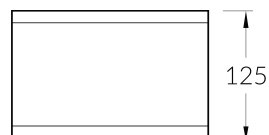
BWU630



BWU835



BWU1040



All photometric and electrical data published are of $\pm 10\%$ tolerance. Characteristics and specifications may change without notice. All electrical installations / connections should be carried out by a suitably qualified person. Application images are indicative only and may not contain actual Davis product. The information contained in this publication is typical and must not be interpreted as a guarantee of individual product performance.