



Installation Instruction



WPL LED series



- Read all instructions to prevent injury, electric shock or damage due to fire or mechanical hazards.
- See product label for supply specifications.
- Suitable for direct mounting on flammable surfaces

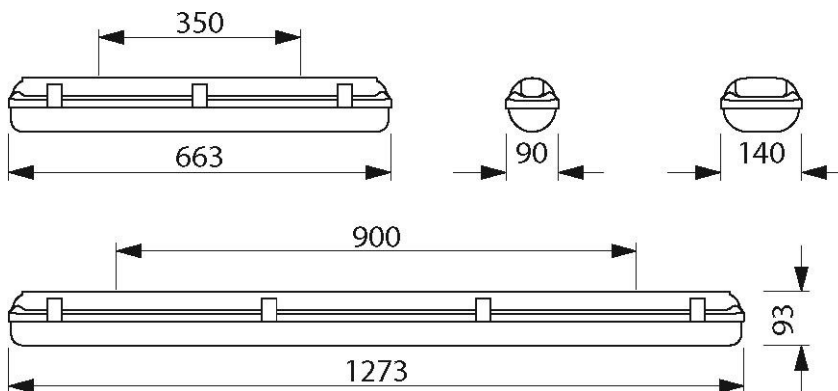


STORAGE:

Prior to installation products are to be stored in cool and dry conditions.

APPLICATION:

The installation application and orientation of the product is designed in accordance with the nominated product IP rating, class designation. Installation environments outside these conditions are not recommended. The product is designed to be installed in the horizontal orientation only.



Cautions:

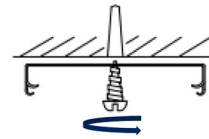
- Installation is to be completed by a competent licensed electrician, in accordance with these instructions and relevant local regulations.
- Electronic control equipment must not be subjected to high voltages, **DO NOT MEGGER** between Line and Neutral.
- All cable/conduit terminations must be installed in accordance with the designated IP rating of this product.
- Suitable installation fastening methods should be employed to ensure the mounting points are not damaged when subjected to vibration and or movement.
- When using glands provided as cord anchorage for flexible cable the cable diameter shall not be less than 8.4 mm and not larger than 12.0 mm.

Installation:

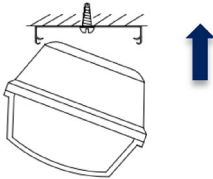
- 1) Install cover clamps to body.



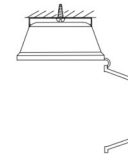
- 2) Secure brackets to mounting surface as per measurements provided opposite.



- 3) Hook the body into the mounting brackets



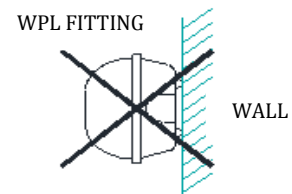
- 4) Open diffuser by unlocking all clamps. If clamps are secured with screws, undo screws first. Note: diffuser will be retained by rear clamps



- 5) Detach gear tray by loosening the four retaining screws and sliding out of place. Ensure lanyards are hooked into gear tray for safety.



- 6) Not suitable for wall mounting.



- 6) Bring in mains supply cables towards the terminal block through supplied cable compression gland for 3 core cable. If supply cables are through conduit, ensure that a suitable termination is made to maintain the IP rating required. Seal with sealant if necessary to prevent water ingress.

- 7) Connect supply cables to terminal block. To maintain EMC compliance, supply cables must be kept away from any lamp wires.

- 8) Replace gear tray.

- 9) Replace cover & latch the clamps. Press to lock.



Security screws must be employed where this symbol appears on the cover.



MAINTENANCE:

The supply must be isolated before opening or accessing the luminaire. Product maintenance is critical to the products designed performance. The product is to be maintained in accordance with the manufacturer's instructions. For the latest product maintenance guides please go to www.davislighting.com. Davis Lighting is not responsible for any product not maintained in accordance with the recommended procedure or intervals. For recommended LAMP / LED maintenance guides, please refer to the lamp installation guidelines supplied with the lamp product or the nominated lamp manufacturer's website. Products supplied with visors or covers must not be operate with a damaged visor or cover; it is recommended damaged visors or covers be replaced by a competent person immediately.

