

This installation guide is valid for the following models:

- Crescendo – SLD



PRIOR TO INSTALLATION



- Read all instructions to prevent injury, electric shock or damage due to fire or mechanical hazards
- See product label for supply specifications
- Suitable for recessed or suspension mounting



Inspect the luminaire and associated parts for any signs of defect, in particular fasteners, cables and the diffuser or glass lens

DO NOT INSTALL THE LUMINAIRE IF IT APPEARS IN ANY WAY FAULTY

Consult with the supplier / sales office for details regarding replacement



CAUTION



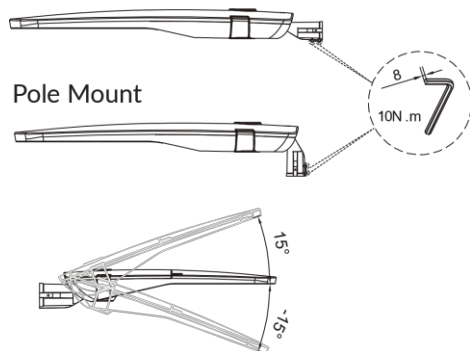
- Before commencing installation, turn off and isolate the electrical supply.
- Electronic control equipment must not be subjected to high voltages. **DO NOT MEGGER** between Live and Neutral.
- All cable / conduit terminations must be installed in accordance with the designated IP rating of this product.
- Suitable installation fastening methods should be employed to ensure the mounting points are not damaged when subjected to vibration and / or movement.
- This luminaire must be installed by qualified electrician in accordance with local rules and codes.
- This luminaire cannot be disassembled by non-professional persons.
- Prior to installation, products are to be stored in cool dry conditions.
- The light source contained in this luminaire is non-user replaceable and shall only be replaced by the manufacturer or his service agent or a similar qualified person.
- If the external flexible cable or cord of this luminaire is damaged, it shall be exclusively replaced by the manufacturer or his service agent or a similar qualified person in order to avoid a hazard.
- Terminal block used must comply to IEC60998-2-1 or IEC60998-2-2, Screw type, 3 poles, 450V, T110, 6mm².

INSTALLATION

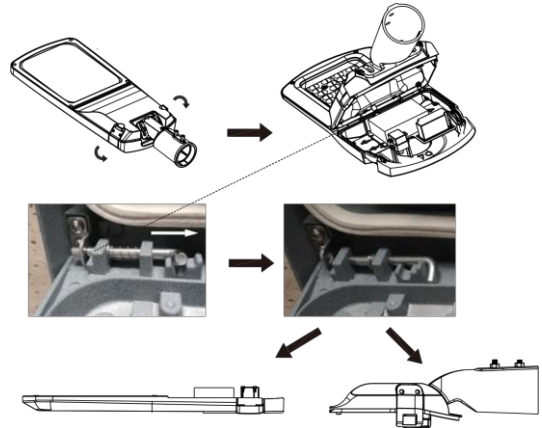
1. Mount the spigot to body at a desired angle (adjustable between -15° and 15°), then tighten it.

Side Mount

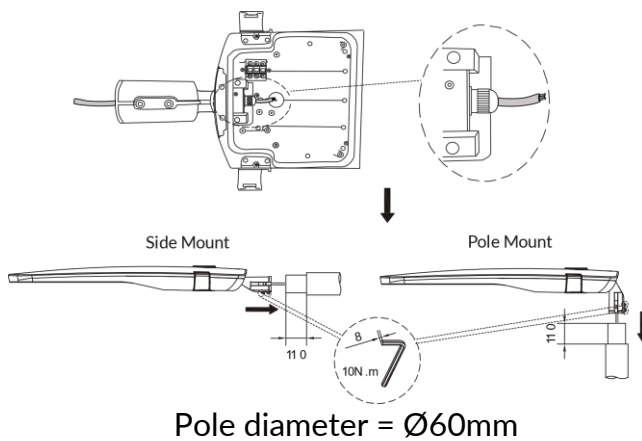
Pole Mount



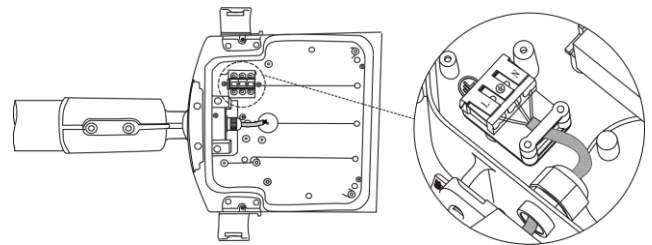
2. Release the clips from the sides to access the gear compartment. Then, unlock the latches to separate into two parts.



3. Pull the cable through cable gland and install the spigot to pole.

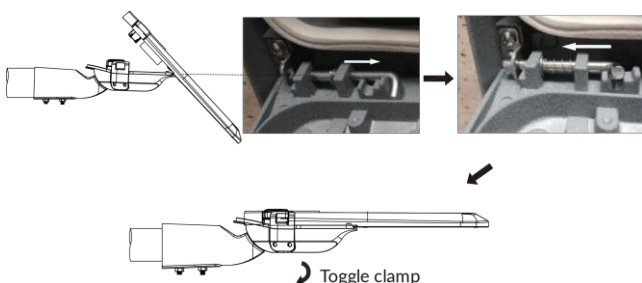


4. Connect the cable to terminals accordingly.



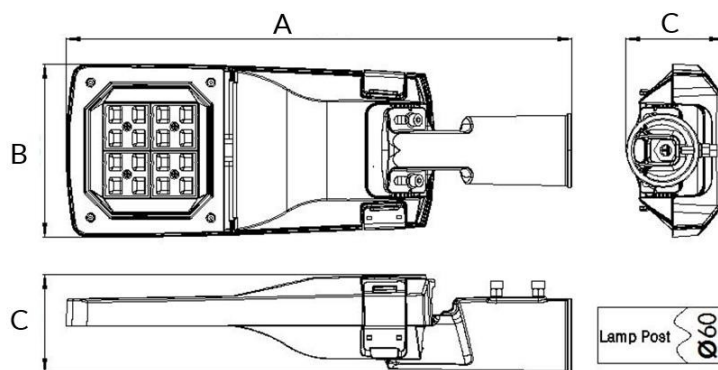
L = Live/Active (BROWN)
 = Earth (YELLOW-GREEN)
 N = Neutral (BLUE)

5. Combine two parts by locking back the latches. Then, toggle clamps to close the gear compartment.



Unauthorized modification & improper installation void product warranty.

DIMENSIONS



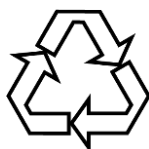
Model	Dimensions (mm)		
	A	B	C
SLD30	543	186	105
SLD60	577	233	103
SLD75 / SLD90 / SLD100	627	272	103
SLD120 / SLD150 / SLD180 / SLD200	768	301	103

MAINTENANCE

The supply must be isolated before opening or accessing the luminaire. Product maintenance is critical to the products designed performance. Davis Lighting is not responsible for any product not maintained in accordance with the recommended procedure or intervals. It is recommended that a bi-annual cleaning cycle is implemented. Inspect optical surfaces for damage or crack. Products supplied with visors or covers must not be operated with a damaged visor or cover; it is recommended damaged visors or covers to be replaced by a competent person immediately. Seals and electrical components such as wirings to be checked for deterioration.



All photometric and electrical data published are of $\pm 10\%$ tolerance. Characteristics and specifications may change without notice. All electrical installations / connections should be carried out by a suitably qualified person. Application images are indicative only and may not contain actual Davis product. The information contained in this publication is typical and must not be interpreted as a guarantee of individual product performance.



This product may contain substances that can be hazardous to the environment if not disposed of correctly. Electrical and electronic equipment should never be discarded along with general waste but should be separated for correct treatment and recovery. Packaging and waste materials should be recycled wherever possible.