



DAVIS LIGHTING

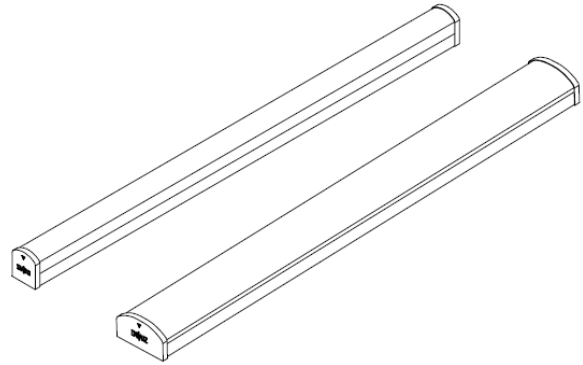
Installation Instruction

ASCELLA LED BATTEN

ACS Series
ACW Series



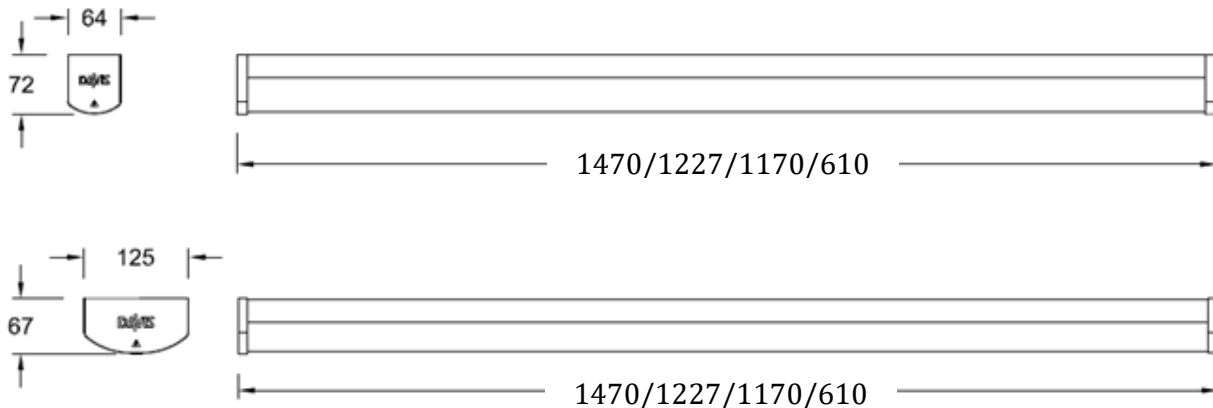
- Read all instructions to prevent injury, electric shock or damage due to fire or mechanical hazards.
- See product label for supply specifications.
- Suitable for direct mounting on flammable surfaces



Storage:

Prior to installation, products are to be stored in cool and dry conditions.

Dimensions:

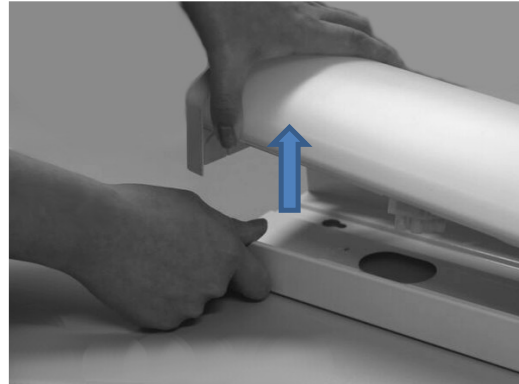
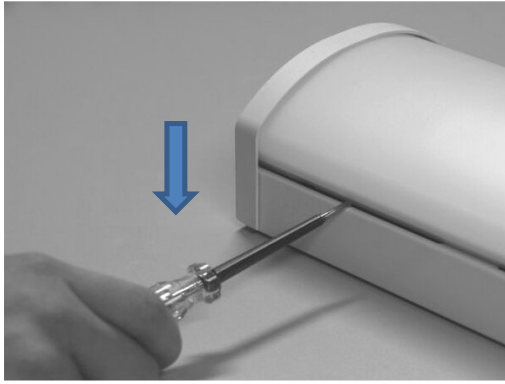


Cautions:

- This luminaire is not suitable for use in freezer or cold rooms.
- Installation is to be completed by a competent licensed electrician, in accordance with these instructions and relevant local regulations.
- Electronic control equipment must not be subjected to high voltages, **DO NOT MEGGER** between Live and Neutral.
- All cable/conduit terminations must be installed in accordance with the designated IP rating of this product.
- Suitable installation fastening methods should be employed to ensure the mounting points are not damaged when subjected to vibration and or movement.

Installation:

1. Warning: The plastic end caps of the product are non-removable by design. Do not attempt to dismantle them.
2. Separate the lamp compartment from the base by using a small screw driver to pry gently near the end cap as shown below. Continue to do so along the length until they come apart. Pull to further separate them.

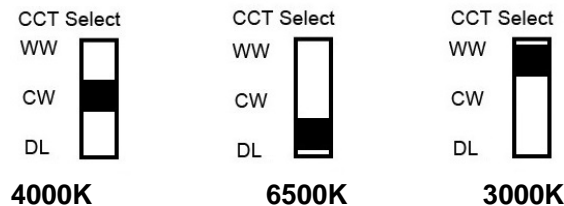


3. Disconnect the safety lanyards and earth cable.
4. Using the base as guide, prepare mounting holes on ceiling. Use appropriate fasteners (not supplied).
5. Pull mains cables through the cable entry and mount the base. The base must be mounted on a flat surface otherwise the lamp compartment may not clip securely.
6. Connect the main supply as indicated on the terminal block.
7. Replace the earth wire and safety lanyards.
8. Replace the diffuser by pressing it until the both parts are clipped together.

For model with CCT color setting feature:

Ensure that the electricity supply is switched off before setting.

Default CCT color is 4000K (CW), to change to 3000K (WW) or 6500K (DL), set the CCT select switch at driver as shown below.



Maintenance:

The supply must be isolated before opening or accessing the luminaire. Product maintenance is critical to the products designed performance. The product is to be maintained in accordance with the manufacturer’s instructions. Davis Lighting is not responsible for any product not maintained in accordance with the recommended procedure or intervals. For recommended LAMP / LED maintenance guides, please refer to the lamp installation guidelines supplied with the lamp product or the nominated lamp manufacturer’s website. Products supplied with visors or covers must not be operated with a damaged visor or cover; it is recommended that damaged visors or covers be replaced by a competent person immediately.

Warning: Maximum loading of earth leakage and circuit protection device.

- The maximum number of ballasts / drivers connected to earth leakage circuit protection device shall not be greater than 40 units for fixed output and 32 units all others or “that as recommended by the protective device supplier/manufacturer whichever is the smaller number”.
- The maximum loading of automatic circuit breakers shall not be greater than those shown in the table supplied by the ballast driver manufacturer or “that as recommended by the protective device supplied/manufacturer whichever is the smaller number”.

