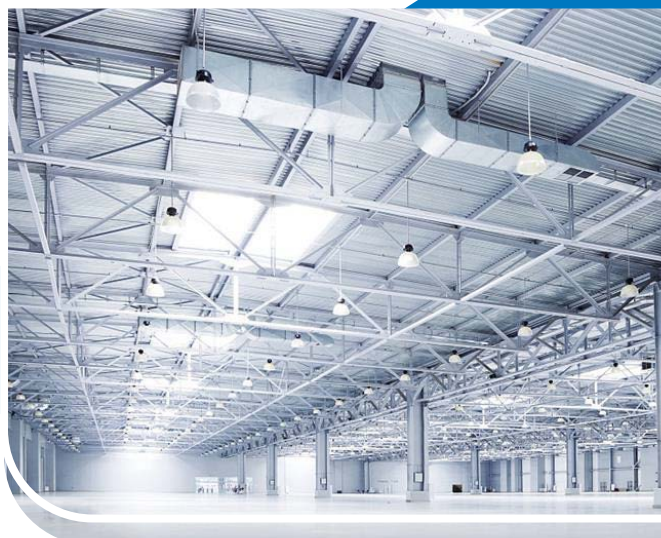




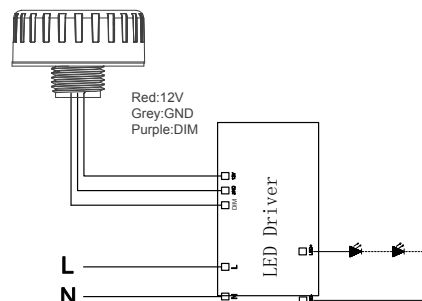
## HD06VCRH 3

Dual PD, 15M highbay

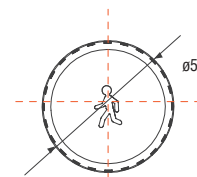
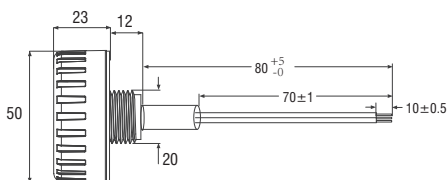
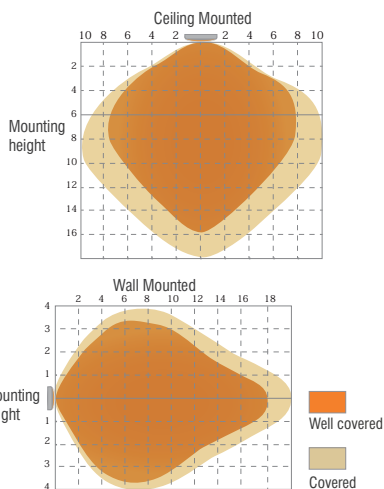


### Default Sensor Setting

Operation: ON/OFF  
 Detection area: 100%  
 Hold time: 5s  
 Daylight threshold: Disable  
 Stand-by periods: 0s



Wiring diagram

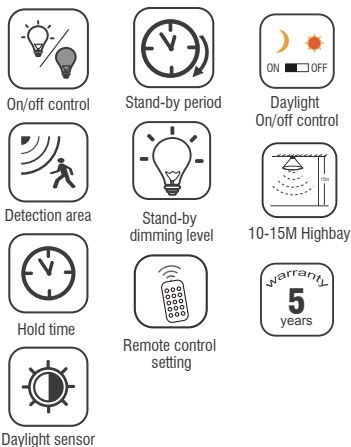


Unit:mm

### 01 Technical data

Operating voltage	10-15V DC
Operating current	30mA±5%
Output	DIM 1-10V
Stand-by power	<0.5W
Detection area	25%/50%/75%/100%
Hold time	5s/30s/1min/3min/5min/10min/20min/30min
Daylight threshold	2Lux/10Lux/50Lux/80Lux/120Lux/Disable
Stand-by period	0s/10s/30s/1min/5min/10min/30min/+ ∞
Stand-by dimming level	10%/20%/30%/50%
Microwave frequency	5.8GHz±75MHz
Microwave power	<0.3mW
Detection angle	30-150°
Mounting height	Max.15m(ceiling mounted)
Detection range	Max.ø14m(ceiling mounted)
Operating temperature	-20°C~+60°C
IP rating	IP65

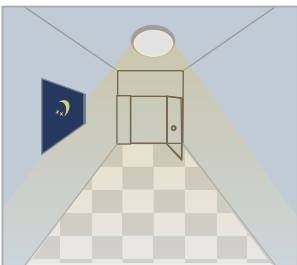
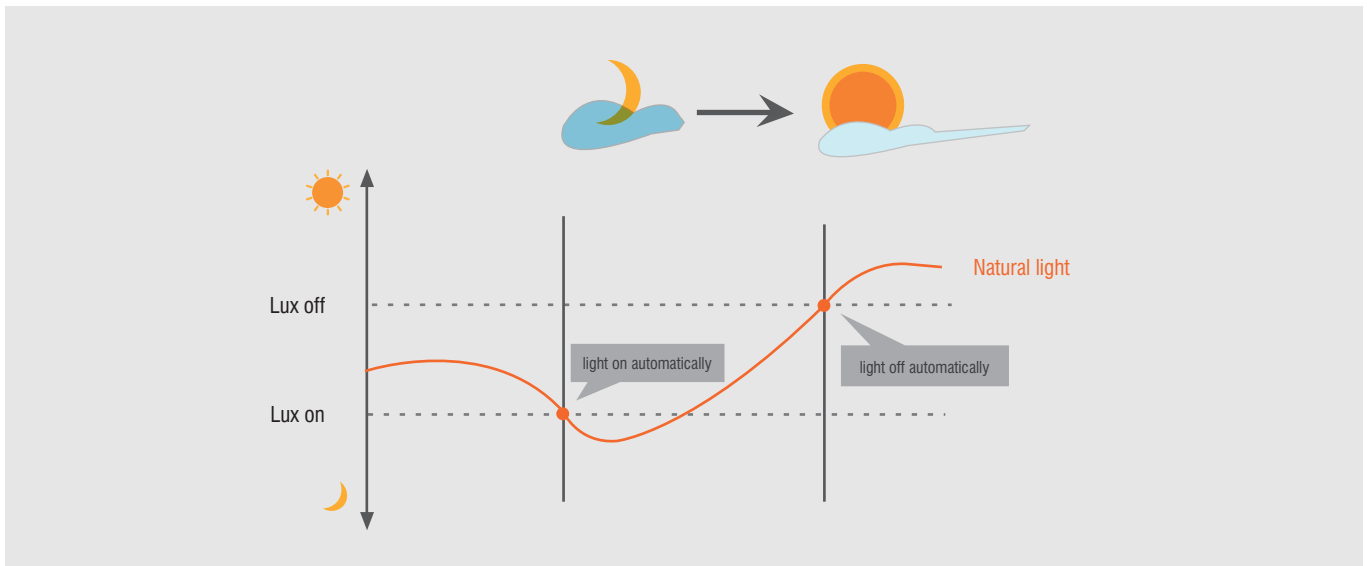
Note: Motion sensor setting and dimming setting please refer to remote control HD02R/HD03R.



Adopted dual PD technology, HD06VCRH 3 is able to differentiate artificial light brightness from natural light after installed inside the fixture, and automatically turn off light when ambient brightness exceeds preset lux level.

Preconditions to use the Lux-off function:

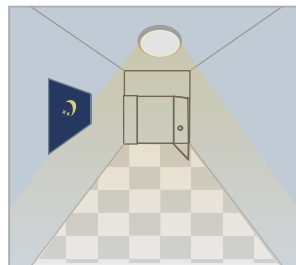
1. Standby period is  $+\infty$ ;
2. Standby dimming level is on 10%, 20% or 30%;
3. Daylight threshold is on 30Lux, 50Lux, 80Lux or 120Lux.



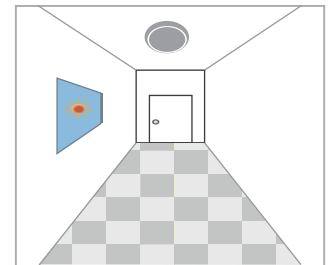
Light automatically on when ambient brightness is lower than preset lux level.



With insufficient ambient brightness, light dims to 100% when motion detected



Light dims to standby level if no motion detected after holdtime



Light off when ambient lux level is higher than preset lux amount.