

# BOWEN BWE

## Interior Lighting / Downlight

### Features

Circular and square profile surface mount downlight  
High performance LED system for maximum energy saving  
Tilttable face  
Available in a range of wattages, colour temperatures and sizes  
CRI  $\geq$  80  
Quick and easy installation

### Applications

Offices  
Hotels  
Retail shops  
Residential

### Options

Triac Dimmable  
Beam Angle 24°, 36° and 60°

### Standards

Manufactured under ISO 9001:2015 to standards  
IEC/AS/NZS 60598.1  
IEC/AS/NZS 60598.2.1  
IEC/AS/NZS CISPR 15

### Mounting



Surface mounted



### Specifications

Model	BWE310-xyz	BWE520-xyz	BWE310S-xyz	BWE520S-xyz
Shape	Round		Square	
Nominal Power (W)	10	20	10	20
Input Voltage (V)	220-240			
CRI (Ra)	>80			
CCT (K)	3000/4000/5000			
Frequency (Hz)	50/60			
Luminaire Flux (lm)	1000	2000	1000	2000
Luminaire Efficacy (lm/W)	100			
Luminaire Rated Life (hr)	50,000 @ L70			
Beam Angle (°)	24/36/60			
Operating Temp. (°C)	-20 to 40			
IP Rating	IP20			
Power Factor	>0.90			
SDCM	<6			
Weight (kg)	0.60	0.80	0.60	0.90

"x" denotes CRI & CCT, R83 = CRI>80, 3000K ; R84 = CRI>80, 4000K ; R85 = CRI>80, 5000K

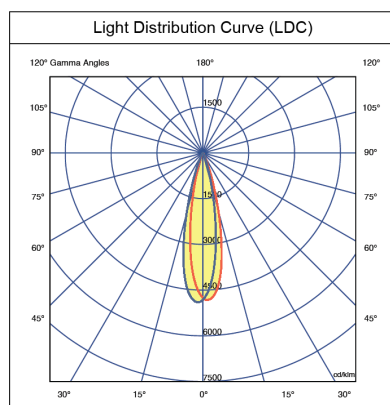
"y" denotes Beam Angle, B24 = 24° ; B36 = 36° ; B60 = 60°

"z" denotes Dimming, D03 = Triac

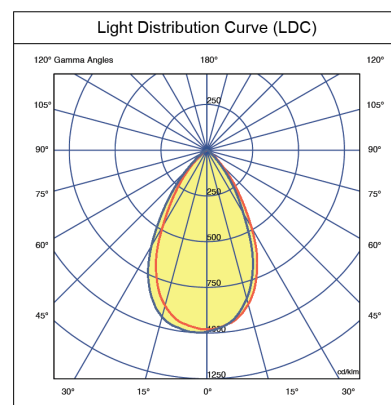
\*Specifications shown for 4000K

### Lighting Data

BWE310-R84B24

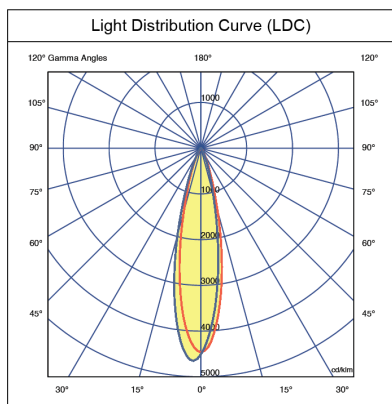


BWE310S-R84B24

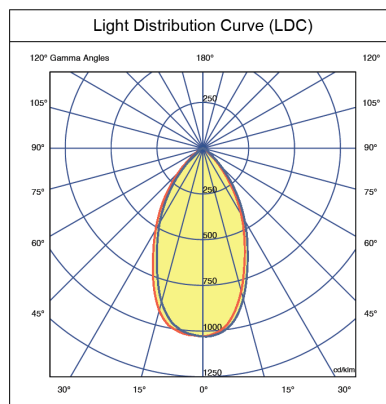




BWE520-R84B24

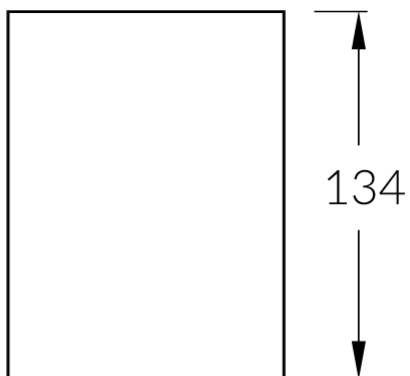


BWE520S-R84B24

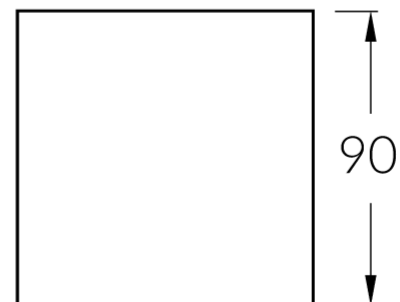
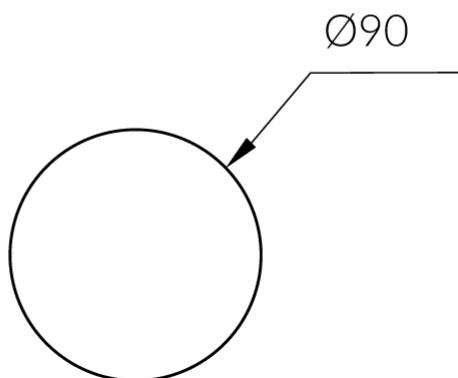
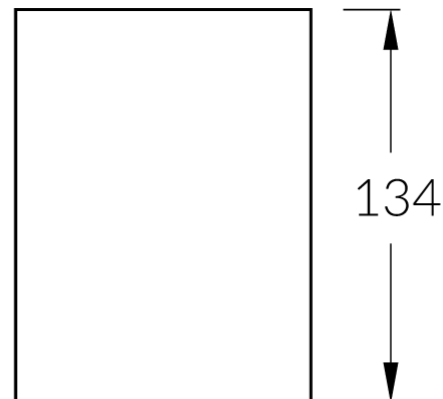


## Dimensions (mm)

BWE310



BWE310S





BWE520



BWE520S

