

Picton

Interior Lighting / Downlight



DAVIS LIGHTING

Features

- Compact, light-weight design
- CCT selectable: 3000K, 4000K, 5000K
- Remote dimmable LED driver
- High efficiency SMD LED chips
- High performance 40,000 hrs LED
- Quick and easy installation
- IC-4 compliant
- IP54 below ceiling, IP20 above

Applications

- Retail shops
- Bars, restaurants
- Galleries
- Display areas
- Bedrooms, lounge rooms

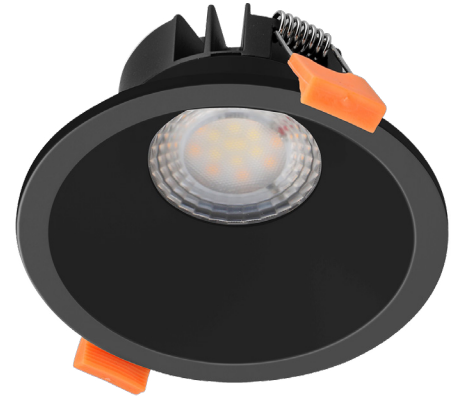
Standards

- Manufactured under ISO 9001:2015 to standards
- IEC/AS/NZS 60598.1
- IEC/AS/NZS 60598.2.2
- IEC/AS/NZS CISPR 15

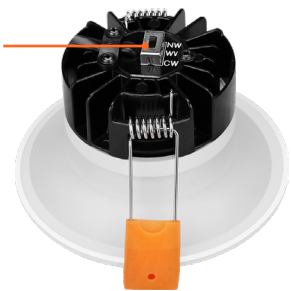
Mounting Methods



Recessed



Selectable CCT

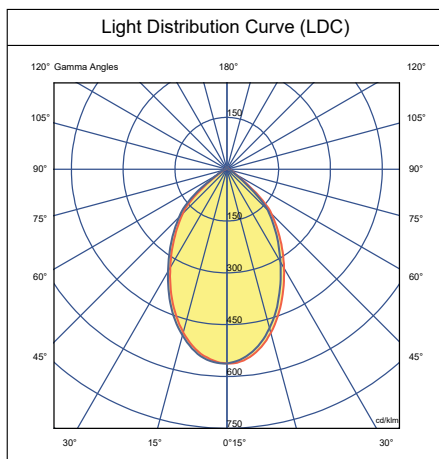


Specifications

Model	PDL9WCT01B06	PDL9WCT03B06
Body Colour	White	Black
Nominal Power (W)	9	
Input Voltage	200 - 240 VAC 50 / 60 Hz	
Luminous Flux (lm)	922	
Efficacy (lm/W)	102	
CRI	> 80	
Power Factor	> 0.90	
CCT Switchable (K)	3000 / 4000 / 5000	
Beam Angle (°)	60	
LED Life L70B50 (hr)	40,000	
Ambient Temp. (°C)	25	

Lighting Data

PDL9WCT01B06 (4000K)



Dimensions

